

# COMPACT

ETHERNET SWITCH

## IP67 SWITCH

UNMANAGED METAL SWITCH

Murrelektronik's TREE series switches can connect Ethernet terminal devices. The new models with IP67 protection are equipped with four or eight M12 ports. They are suitable for applications in harsh industrial environments, for example in robots, in cranes and in die-casting and molding machines. They make it possible to cost-effectively implement decentralized machine concepts in star topologies.



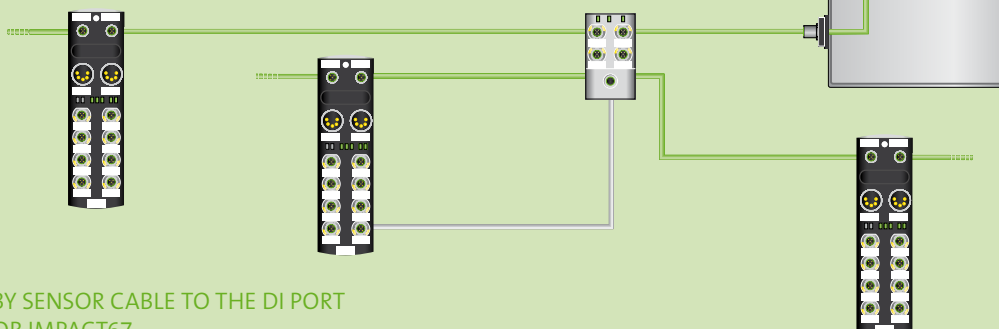
### NETWORKING EFFECTIVELY

- 4 or 8 M12 connections (d-coded)
- Immune to electromagnetic interference
- Vibration resistant
- Wide temperature range (-25...60 °C)
- Prioritizes PROFINET (QoS IEEE 802.1q)
- Redundant supply voltage (18...30V)

### CLEAR ADVANTAGES

- Cascading design possible
- Few models on one line – ensure reliable operation
- Improved network structures

More Space  
in the  
Cabinet



POWER SUPPLY BY SENSOR CABLE TO THE DI PORT  
OF MVK METAL OR IMPACT67

## TREE

	Description	Ports	Art. No.:
	Tree 4TX IP67 Metal – Unmanaged Switch – 4xM12	4	58160
	Tree 8TX IP67 Metal – Unmanaged Switch – 4xM12	4	58161

## CABLES WITH M12 D-CODED CONNECTORS

	Description	Length	Cable Type		
			Flexible (> 3 million)	Torsion ( $\pm 360^\circ/m$ )	Cabinet –
	male 0° / male 0°	1.5	7000-44511-7960150	7000-44511-7930150	7000-44511-7940150
		3	7000-44511-7960300	7000-44511-7930300	7000-44511-7940300
		5	7000-44511-7960500	7000-44511-7930500	7000-44511-7940500
		7,5	7000-44511-7960750	7000-44511-7930750	7000-44511-7940750
		10	7000-44511-7961000	7000-44511-7930100	7000-44511-7940100
	male 90° / male 90°	1.5	7000-44561-7960150	7000-44561-7930150	7000-44561-7940150
		3	7000-44561-7960300	7000-44561-7930300	7000-44561-7940300
		5	7000-44561-7960500	7000-44561-7930500	7000-44561-7940500
		7,5	7000-44561-7960750	7000-44561-7930700	7000-44561-7940700
	male 0° / male 0°	1.5	7000-44711-7960150	7000-44711-7930150	7000-44711-7940150
		3	7000-44711-7960300	7000-44711-7930300	7000-44711-7940300
		5	7000-44711-7960500	7000-44711-7930500	7000-44711-7940500
		7,5	7000-44711-7960750	7000-44711-7930750	7000-44711-7940750
	male 0° / male 45° bottom	1.5	7000-44731-7960150	7000-44731-7930150	7000-44731-7940150
		3	7000-44731-7960300	7000-44731-7930300	7000-44731-7940300
		5	7000-44731-7960500	7000-44731-7930500	7000-44731-7940500
		7,5	7000-44731-7960750	7000-44731-7930750	7000-44731-7940750
	male 0° / open ended wires	1.5	7000-14541-7960150	7000-14541-7930150	7000-14541-7940150
		3	7000-14541-7960300	7000-14541-7930300	7000-14541-7940300
		5	7000-14541-7960500	7000-14541-7930500	7000-14541-7940500
		7,5	7000-14541-7960750	7000-14541-7930750	7000-14541-7940750
	male 90° / open ended wires	1.5	7000-14561-7960150	7000-14561-7930150	7000-14561-7940150
		3	7000-14561-7960300	7000-14561-7930300	7000-14561-7940300
		5	7000-14561-7960500	7000-14561-7930500	7000-14561-7940500
		7,5	7000-14561-7960750	7000-14561-7930750	7000-14561-7940750
		10	7000-14561-7961000	7000-14561-7930100	7000-14561-7940100

## FIELD-WIREABLE RJ45 CONNECTORS

	Description	Type	No. of Poles	Art. No.:
	M12 connector d-coded field-wireable IDC	0°	4	7000-14521-0000000
	M12 connector d-coded field-wireable IDC	90°	4	7000-14581-0000000
	RJ45 Professional connector shielded	0°	4	7000-74001-0000000
	RJ45 Professional connector shielded	45°	4	7000-74021-0000000

## T-COUPLER M12

	Description	Type	No. of Poles	Art. No.:
	T-coupler M12 (for daisy chaining the power supply)	A-coded	5	7000-42751-0000000